

The following features make this the most widely used series:

- Checkable water circuit, ensuring compatibility with all types of industrial water system.
- 4-flow-water circuit allowing for increased thermal yield with no increase in water consumption or, alternatively, to obtain the same thermic yield with a lower water consumption.
- The particular configuration of the tube nest provides higher thermic yields, even with comparatively limited exchange surfaces and dimensions.

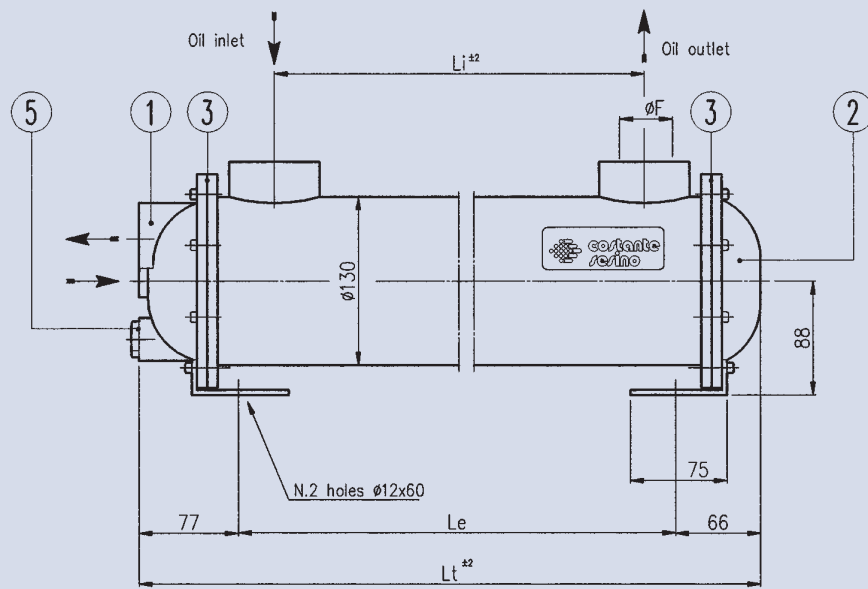
The exchange surfaces range from 0,2 to 3,6 m<sup>2</sup>, covering all the thermic exchanges, which are generally used in the hydraulic field. To avoid any form of corrosion, it is necessary to ensure that the water rate is not greater than to the following values:

45 l/min for MS 84      110 l/min for MS 134

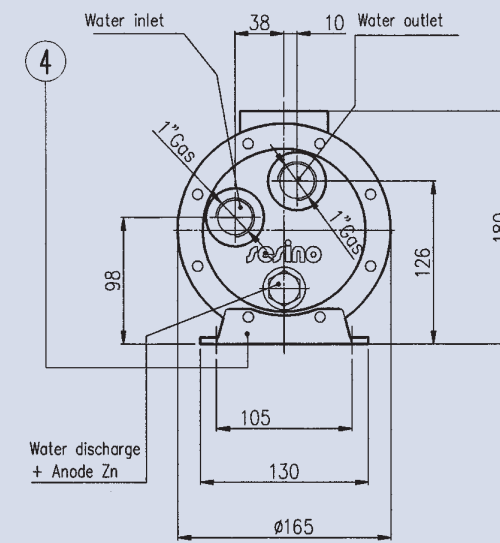
If such values do not provide a good thermic yield, please consult our Technical Department.

cSt	22	30	46	68	100	150	220
f	0,4	0,6	1	1,5	2,3	3,3	4,6

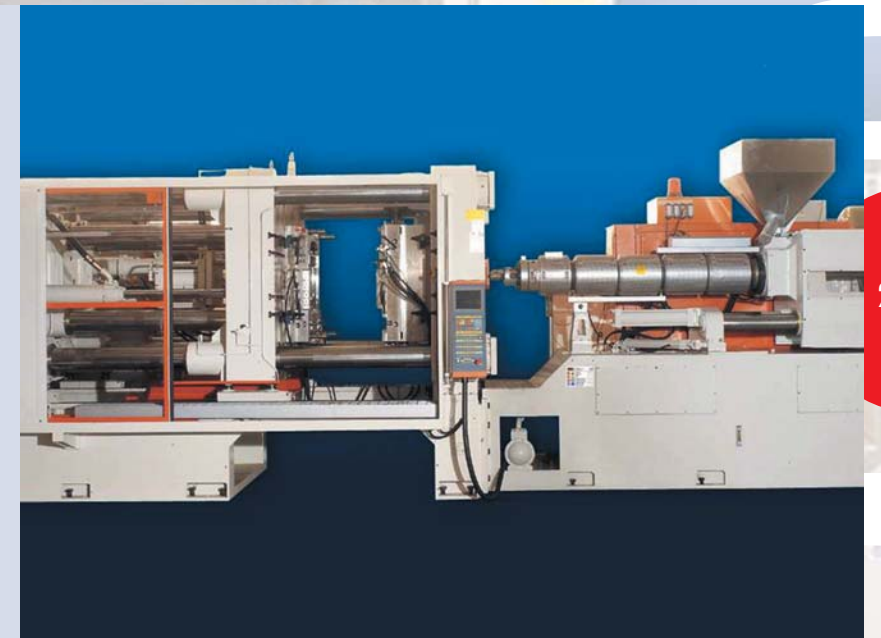
**CORRECTION FACTOR**



Head gaskets: OR 4512



Dimensions and technical characteristics are not binding



Type	Oil flow l/min	kW dissipated with oil = 50°C, 46 cSt, H2O=15°C	Weight kg	Dimensions			
				Ø F	Li	Le	Lt
MS 134 P1	30 - 100	19 - 23	16,4	1 1/2" gas	285	286 - 384	480
MS 134 P2	40 - 130	33 - 37	22,6	1 1/2" gas	535	536 - 634	730
MS 134 P3	120 - 250	33 - 37	23,0	2" gas	520	536 - 634	730
MS 134 P4	80 - 250	48 - 56	30,7	1 1/2" gas	845	846 - 944	1.040
MS 134 P5	200 - 400	48 - 56	30,9	2" gas	830	846 - 944	1.040
MS 134 P6	30 - 120	70 - 75	40,0	1 1/2" gas	1.145	1.146 - 1.244	1.340
MS 134 P7	200 - 500	70 - 75	39,5	2" gas	1.130	1.146 - 1.244	1.340

TABLE